



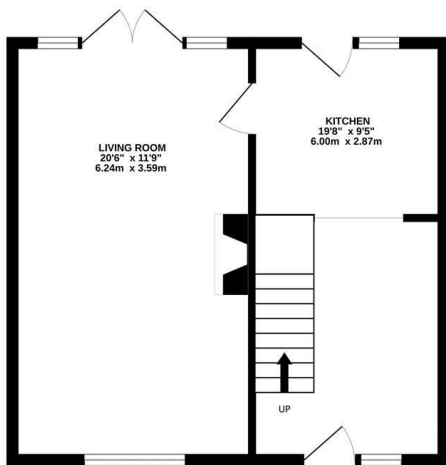
## Harrow Lane, St. Leonards-On-Sea TN37 7JY

Offers in excess of £260,000

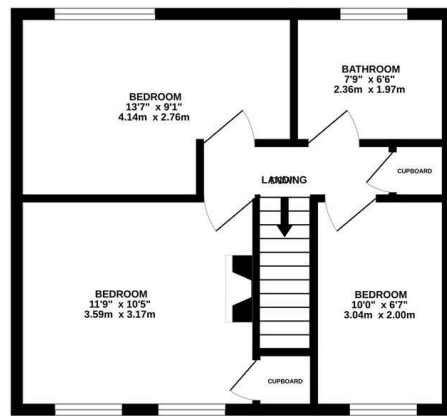


A deceptively spacious three bedroom TERRACED FAMILY HOME with off road parking. It's ideally located close to popular Primary and Secondary Schools, within easy reach of transport links and the Conquest Hospital. Accessed via an enclosed porch, the accommodation here is arranged as a DUAL ASPECT LIVING SPACE with room for a full dining table creating the ideal sociable space, enjoying a feature fireplace and benefitting from double doors leading to the garden. The FITTED KITCHEN is separate measuring 19'8 x 9'5, providing ample storage and worktop space with a back door and additional access to the garden. The first floor houses three bedrooms, two of which are GENEROUS DOUBLE ROOMS, alongside a MODERN FAMILY BATHROOM with a bath and a shower over. Externally there is an enclosed rear garden with an area of patio, plus an expanse of lawn bordered by mature shrubs and trees creating the ideal spot to DINE AL-FRESCO while at the front of the property there is an area of lawn followed by a DRIVEWAY providing off road parking for one vehicle. This fantastic property would make the PERFECT FAMILY HOME and is not to be missed.

GROUND FLOOR  
427 sq.ft. (39.6 sq.m.) approx.



1ST FLOOR  
407 sq.ft. (37.8 sq.m.) approx.



TOTAL FLOOR AREA : 834 sq.ft. (77.4 sq.m.) approx.

Whilst every attempt has been made to ensure the accuracy of the floorplan contained here, measurements of doors, windows, rooms and any other items are approximate and no responsibility is taken for any error, omission or mis-statement. This plan is for illustrative purposes only and should be used as such by any prospective purchaser. The services, systems and appliances shown have not been tested and no guarantee as to their operability or efficiency can be given.

Made with Metropix ©2026

